

that may help their economic growth.

Big events have the power to link products to culture and an exhibition becomes in this way, a moment of cultural exchange in addition to offering the opportunity to get a view of a given market perspectives and development potential, an occasion for focusing on the production process, the use of instruments, tools and techniques.

The topics that are dealt with during the events that are organised within the framework of trade fairs, can actually draw the attention of the sector to the design stage and the various technological aspects. And it is true that only internationally certified companies can positively

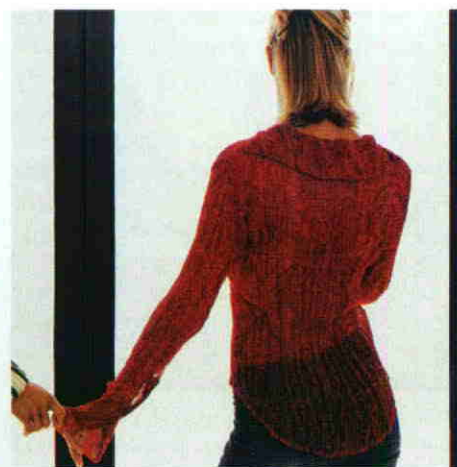
affect the sector.

Among these major topics that have been dealt with recently: energy savings and home safety, the latter being related to the door and window sector.

Large trade fairs are a showcase for architects and designers, a place where they can see new materials, new technologies to apply to their projects; an occasion for "studying and learning" with the view of improving quality of living in a world where it will be necessary to find a way to gradually and properly use energy while keeping into account comfort and quality of living. International trade fairs are attended by hundreds of sector professionals who look for professional upgrading and training but

who can also have a role in spreading information and knowledge of the features and possibilities offered by these products in term of wellness, modernity and comfortable life within the framework of a bio-compatible building to the service of men and women in the third millennium.

We have tried to offer on the pages of this magazine, a brief description of those companies that have more than others been able to face and find a solution to the major problems of the sector, and have applied their technologies for a better living comfort, improved safety and design quality.



ROTO Patio Life di Roto semplifica la vita. Il sistema di ferramenta permette di evitare di dover sollevare porte che spesso richiedono una fatica non indifferente. Nuovo: la soglia comfort senza ponte freddo, prodotto con una combinazione di materiali dotati di ottimali caratteristiche isotermitiche. Soglie senza barriere: la piastra guida di scorrimento permette di abitare senza barriere e nella migliore delle forme. Ulteriori novità del programma Patio: Patio 3130 S Alu. Prevista come variante leggera per profilati d'alluminio con battenti fino a 130 kg. Nel settore legno-PVC la linea Patio Z NT aggiunge una nuova apertura di 145 mm, un sistema alzante scorrevole parallelo per profilati con un'alta profondità.

Patio Life by Roto makes life easier. This new sliding-hardware system saves you the task of having to lift the door, which is a quite laborious duty. A new feature has now been added: a comfort threshold with no "cold break", achieved with the use of different isothermal materials. Barrier-free thresholds: the flat sliding rail permits to eliminate all barriers. Among the other new features of the Patio programme: Patio 3130 S Alu, conceived as a light version for aluminium door frames with leaves of up to 130 kg of weight. And among the PVC-timber range: the Patio Z NT range which is now complete with a 145 mm opening version, and a parallel lift&slide system for thick profiles.



SOMFY La gestione delle Facciate Dinamiche (GDF) è un sistema che Somfy ha sviluppato già da molti anni presso gli operatori dell'edilizia. Il comfort visivo è una gestione primaria nell'allestimento degli uffici: la GDF Somfy offre condizioni visive nettamente più comode e igieniche, quindi una migliore produttività. La GDF Somfy regola, in tempo reale, gli scambi termici tra la facciata e l'esterno, mentre offre un maggior comfort di vita e di lavoro, sia d'inverno che d'estate. GDF Somfy è l'automazione per una facciata a scambi termici regolati che contribuisce alla riduzione dei consumi energetici e alla diminuzione degli investimenti di impianti di produzione termica.

The Management of Dynamic Facades (MDF) system has been developed by Somfy many years ago, for the building industry. Visual comfort has become a major office layout design principle: Somfy's MDF offers improved visual comfort which in turns translate into greater productivity. La GDF Somfy's MDF guarantees real-time control of thermal exchanges between the inside and the outside of a building façade, optimising comfort of those living or working inside the building, both in winter and the summer. Somfy's MDF is a façade automation system which permits to control thermal exchanges, thus contributing to achieving energy savings and reduced investments in thermal systems.



TONINI La ricerca di qualcosa di unico rende il Mod. Aurora, prestigioso serramento in PVC prodotto da Tonini, un elemento prezioso dove lo stile raffinato è la massima espressione della bellezza. L'atmosfera morbida creata dalle linee arrotondate riscalda ogni ambiente, creando un luogo caldo e sicuro. L'armonia del Mod. Polare Tonini è un dono innato, che l'esperienza trasforma in qualcosa di più raro e seducente. È la collezione arrotondata per eccellenza: esemplare espressione di una perfetta sinergia tra forma e stile.

The research for something that is absolutely innovative makes the Aurora door and window frames by Tonini, a highly valuable product for its elegance and beauty. The warm atmosphere which can be created with the installation of these smooth styled elements, makes every interior a warm and safe place. In particular, the harmonious lines of the Polare Tonini line, add uniqueness and charm to the interior. This collection is characterised by smooth lines, a perfect synergy of shape and style.